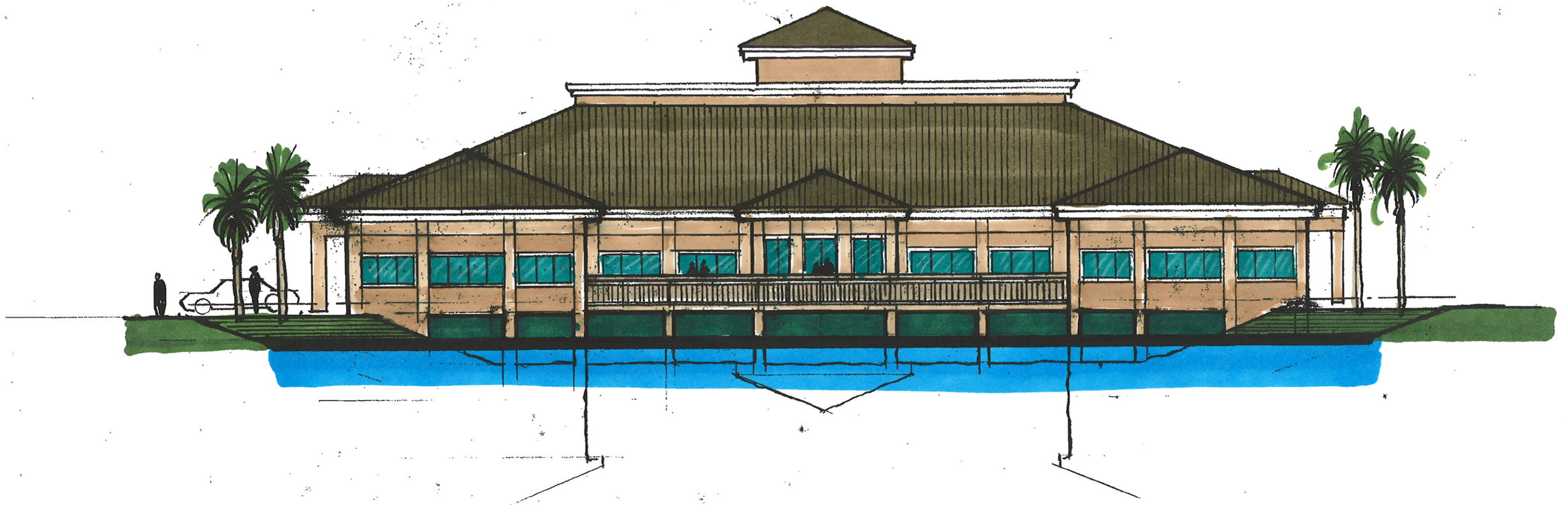


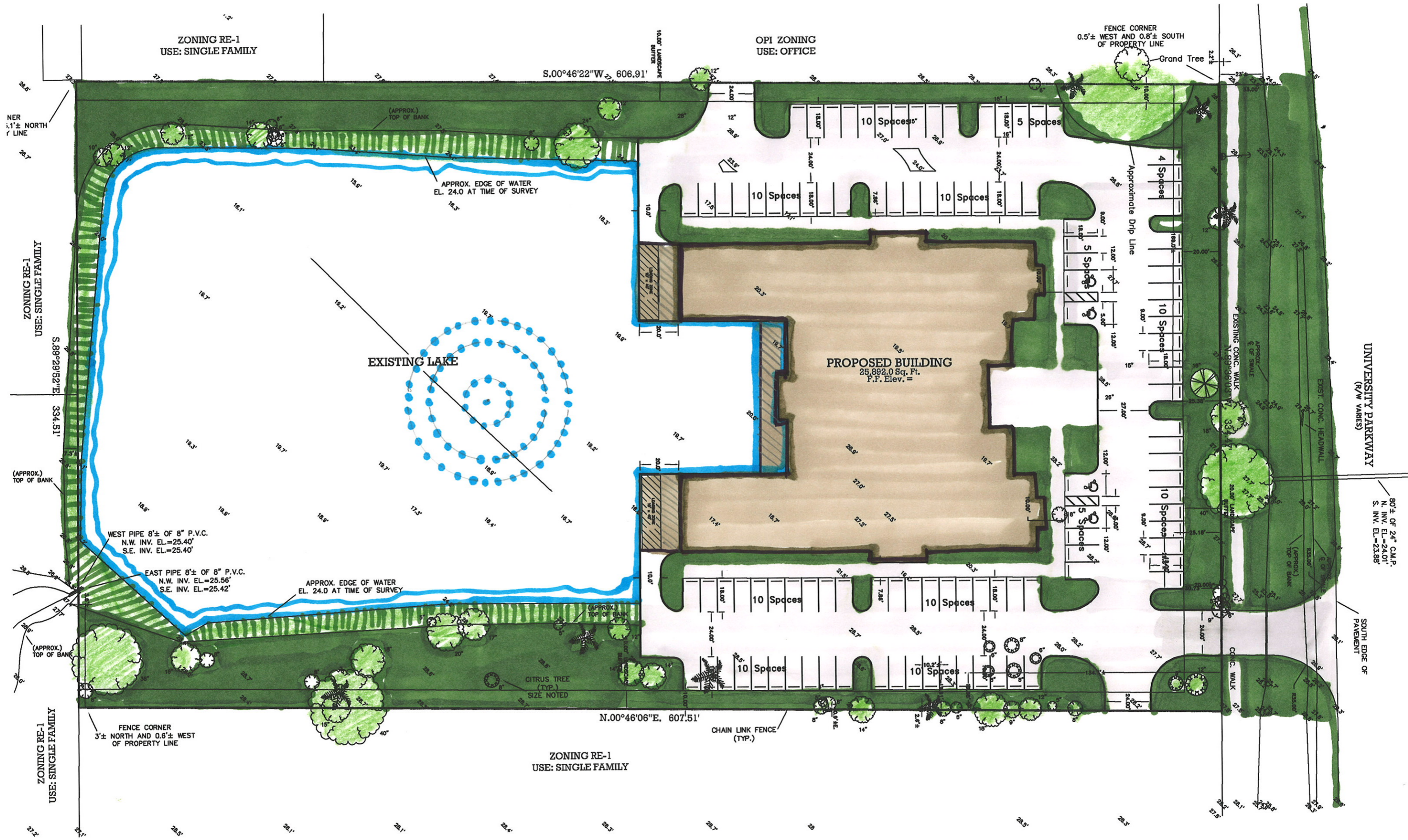
LAKEFRONT OFFICE COMPLEX
UNIVERSITY PARKWAY, SARASOTA



LAKEFRONT OFFICE COMPLEX

UNIVERSITY PARKWAY, SARASOTA





ZONING RE-1
USE: SINGLE FAMILY

OPI ZONING
USE: OFFICE

FENCE CORNER
0.5'± WEST AND 0.8'± SOUTH
OF PROPERTY LINE

S.00°46'22"W 606.91'

APPROX. EDGE OF WATER
EL. 24.0 AT TIME OF SURVEY

EXISTING LAKE

PROPOSED BUILDING
26,892.0 Sq. Ft.
F.F. Elev. = 24.0

UNIVERSITY PARKWAY
(R/W VARIES)

80'± OF 24" C.M.P.
N. INV. EL.=24.01'
S. INV. EL.=23.88'

SOUTH EDGE OF
PAVEMENT

N.00°46'06"E. 607.51'

ZONING RE-1
USE: SINGLE FAMILY

ZONING RE-1
USE: SINGLE FAMILY

ZONING RE-1
USE: SINGLE FAMILY

NER 1.1'± NORTH
LINE

S.89°29'52"E 334.51'

(APPROX.)
TOP OF BANK

(APPROX.)
TOP OF BANK

WEST PIPE 8'± OF 8" P.V.C.
N.W. INV. EL.=25.40'
S.E. INV. EL.=25.40'

EAST PIPE 8'± OF 8" P.V.C.
N.W. INV. EL.=25.56'
S.E. INV. EL.=25.42'

APPROX. EDGE OF WATER
EL. 24.0 AT TIME OF SURVEY

CITRUS TREE
(TYP.)
SIZE NOTED

CHAIN LINK FENCE
(TYP.)

Approximate Drip Line

EXISTING CONC. WALK
N. 9.99'± OF SWALE

EXIST. CONC. HEADWALL

CONC. WALK

(APPROX.)
TOP OF BANK

Grand Tree

27.2 27.1 28.5 28.1 28.4 28.3 28.7 28 28.5 28.3 27.8 28.1 28.2 28.5 28.3